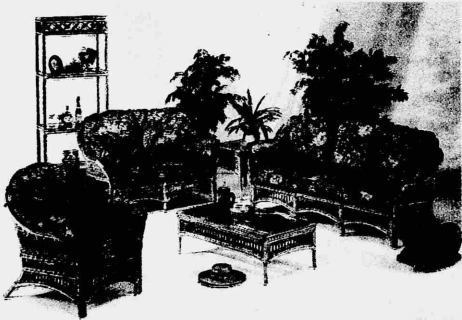


Southport Flower Show

QUALITY SPEAKS FOR ITSELF.



Beautiful ranges of Rattan furniture are now on display at our Flower Show site and our Eastbank Street Showroom.

Hewitt's

INTERIORS

42/46 EASTBANK STREET, SOUTHPORT
TELEPHONE: 0704 535000

Still going strong

This is the 65th Southport Flower Show, but it isn't the 65th year of the event.

The first show in 1924 was known as the Grand Floral Fete. But as with so many things there was a break during the war until a modified show was staged in 1940.

The true event started up again in 1947, with the Silver Jubilee in 1954 and the Golden Jubilee in 1979.

terrible weather saw even more people. And 1978 suffered a downpour in the run-up to the show but still scored even higher attendance figures!

Visitors to the

biggest summer flower show come from all over the world, including every country in Europe, the USA and Canada, and hundreds from Africa, India, Pakistan, Malaya, Australia and New Zealand.

The Sefton Borough

Council withdrew its support from the show in 1986 due to massive losses. This could have meant the end of the

show but thanks to a group of enthusiasts, who took over the show and removed all the extras like horse-jumping and air

displays, the show continued with an emphasis on horticulture.

Enthusiasts have helped the loss-making event become a profitable one, with the help of Sefton Council's in-kind support.

Trophies

The highest attendance ever at the show was in 1969, when a massive 131,000 people attended. More than 80 trophies are awarded over the three day event and they are worth more than £100,000.

More than £122,000 is spent on trophies and medals and given in prize money.

With the whole of the Silver Jubilee came in one of the worst summers on record, but the wind and rain cleared for the three days of show as if by magic, before reverting to its stormy state.

Bad weather doesn't prevent people from coming along to enjoy the show. In 1976 glorious weather brought in unusually high numbers, but the following year's

G'day to you, mate

ENTERTAINER Rolf Harris will be saying a big G'day to visitors at next week's 1994 Southport Flower Show.

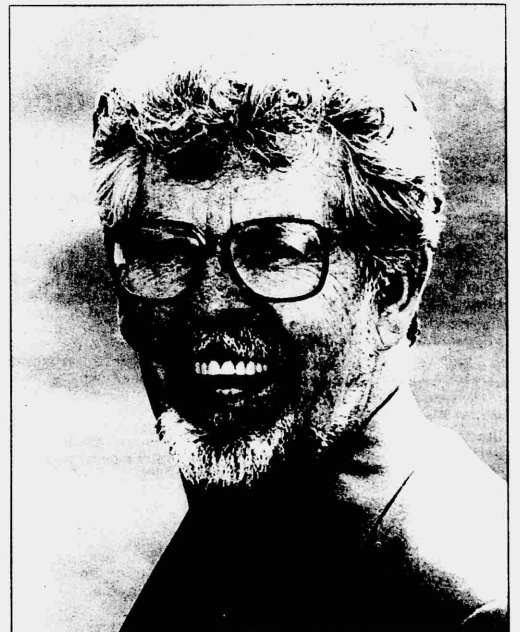
Rolf will be on the showground from early morning on Thursday (August 18) with an opportunity for a preview of the showground before he opens the event officially from the bandstand at 10am.

With the whole of the day devoted to his first visit to the event, Rolf will have plenty of time to walk around the exhibits, present trophies and take the opportunity to meet his many fans.

"Rolf Harris has been a household name for many years and is widely recognised as one of the world's great entertainers," said flower show chief executive Tom Bradshaw.

"His versatility ranges from fascinating displays of artistic skills through his comedy songs and into his ability to inform and entertain audiences as diverse as children's theatre groups to university students."

His travels have taken him around the globe several times, with sell-out shows and TV documentaries in



G'DAY MATE • Rolf Harris OBE, who will be opening this year's show. Code NA

such places as Canada, India and, of course, his native Australia.

When he is not entertaining millions, Rolf is often found working hard for charities, particularly those that involve children.

PHAB (Physically Handicapped and

Able Bodied) and NSE (National Society of Epilepsy) are two of the key organisations with which he is involved.

Rolf has been awarded the OBE and MBE.

"We are delighted that Rolf was able to accept our invitation to open

the Southport Flower Show," added Mr Bradshaw.

"He has a great affinity both with the natural world and with horticulture and gardening, and I am sure he will delight the crowds at Southport when he opens the 1994 show."



HORTICULTURAL SOCIETIES AND ENTHUSIASTS

Specialist Holidays available

Visit us on Stand 22, Grand Foral Marquee, for further details of these exciting tours.

Or contact
The Guernsey Tourist Board,
P.O. Box 23, St. Peter Port, Guernsey,
Channel Islands GY1 3 AN.

Guernsey -the Foral Island.

Get tickets early and save

TICKETS are available in advance from various outlets, or visitors may pay at the gate.

Prices are:
• **Adults** — £6 in advance; £7 at the gate for a full day and £3 after 4pm.

• **Senior Citizens** — £5 in advance; £6 at the gate and £3 after 4pm.

• **Young Persons** (12 to 16 years) — £2.50 in advance; £3 at the gate and £1 after 4pm.

• Two children under 12 will be admitted free when accompanied by an adult.

• Admission for the **Firework Display** on Friday (August 19) from 6pm will be £2 for adults and £1 for children.

• **Patron's badges** cost £15 for adults, £12.50 for Senior Citizen's Badges, £5 for Young Person's Badges (under 17). Included in the price is three day admission with pass out facility and full use of the Patrons' Marquee and exclusive amenities for your convenience.

All prices are inclusive of VAT at 17.5 per cent.

• Facilities for the disabled include access for guide dogs, hire of wheelchairs, toilets, rest tent and flat and convenient walkways for easy access.

• The showground will be open from 9am to 7.30pm on Thursday, August 18; 9am to 8.30pm on Friday, August 19 (extended for the firework display), and 9am to 5.30pm on Saturday, August 20.

For further details contact the Flower Show office at 42, Houghton Street, Southport, telephone (0704) 547147.